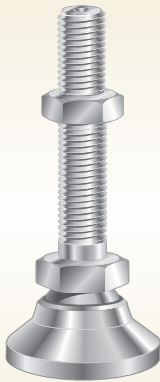


LEVELING DEVICES*Original Stud Style***Original Leveling Devices****Inch-Standard Length****Steel**

Vlier Stud Style Steel Leveling Devices provide an integrally machined stud as part of the ball. Stud Style Bases swivel 15° off the centerline to adjust to uneven surfaces and level machine tools, electronic racks, benches, etc. Zinc plate with gold chromate finish is standard. Black and clear (silver) finishes are optional and require extra lead time.

Stainless Steel

Vlier Stud Style Stainless Steel Leveling Devices offer the advantage of an all-stainless steel design for maximum protection against rust and corrosion.

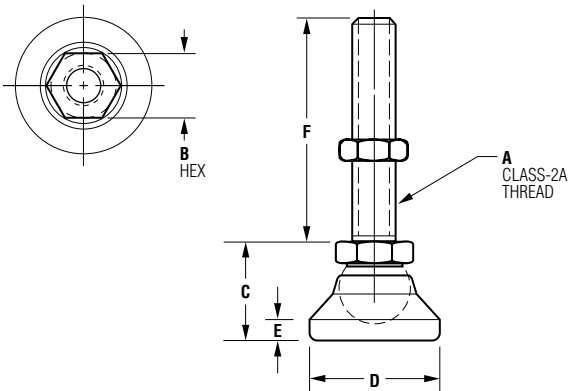
Steel (Fine Thread)

Ideal for applications which require a more sensitive leveling adjustment.

Special Features

- ◆ Hardened ball
- ◆ Stud and integrally machined ball
- ◆ Large diameter base support
- ◆ 15° swivel off centerline

Stud Style - Inch - Standard Length (Metal) Unified ANSI & Fine Thread



Stud Style - Steel/Stainless Steel								
Part No.		Max load (lbs)	A	B	C	D	E	F
Steel	Stainless Steel							
P298S	SSP298S	700	10-32	3/8	17/32	3/4	7/64	1
P300S	SSP300S	1100	1/4-20	1/2	45/64	1	5/32	1 1/4
P304S	SSP304S	3,750	3/8-16	5/8	7/8	1 1/4	3/16	2
P306S	SSP306S	5,000	1/2-13	3/4	1 1/8	1 7/8	1/4	2
P308S	SSP308S	6,000	5/8-11	7/8	1 1/4	2 1/2	5/16	2
P310S	SSP310S	7,200	3/4-10	1 1/16	1 1/2	3	1/2	2
P312S	SSP312S	22,000	1-8	1 3/8	1 7/8	4	13/32	4 1/4

Steel Base, Steel Stud (Fine Thread)							
Part No.	Max load (lbs)	A	B	C	D	E	F
FP304S	3,750	3/8-24	5/8	7/8	1-1/4	3/16	2
FP306S	5,000	1/2-20	3/4	1-1/8	1-7/8	1/4	2
FP308S	6,000	5/8-18	7/8	1-1/4	2-1/2	5/16	2
FP310S	7,200	3/4-16	1-1/16	1-1/2	3	1/2	2
FP312S	22,000	1-12	1-3/8	1-7/8	4	13/32	4-1/4

Ordering for Optional Steel Finishes

To order black, add "1" at the end of the part number. To order silver, add "2" at the end of the part number. Allow four weeks lead time.

LEVELING DEVICES*Original Stud Style*

Original Leveling Devices

Inch - Standard Length**Steel with Elastomer Pad**

Vlier Stud Style Steel with Elastomer Pads offer a .125 neoprene elastomer bonded to the bottom of the base to provide non-skid support. Zinc plate with gold chromate finish is standard. Black and clear (silver) finishes are optional and require extra lead time.

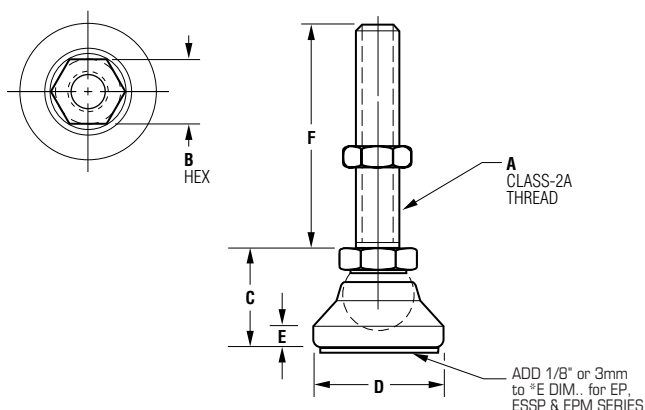
Stainless Steel with Elastomer Pad

Vlier Stud Style Stainless Steel with Elastomer Pads offer the advantage of an all-stainless steel design for maximum protection against rust and corrosion.

Special Features

- ◆ Non-skid elastomer pad
- ◆ Protects floor or surface finish
- ◆ Hardened ball
- ◆ Stud and integrally machined ball
- ◆ Large diameter base support
- ◆ 15° swivel off centerline

Stud Style - Inch - Standard Length (Elastomer Pad)



Steel Base w/Elastomer Pad, Steel Stud

Part No.	Max (Lbs) Work Load	A	B	C	D	E	F
EP298S	525	10-32	3/8	17/32	3/4	7/64	1
EP300S	800	1/4-20	1/2	45/64	1	5/32	1 1/4
EP304S	2,800	3/8-16	5/8	7/8	1 1/4	3/16	2
EP306S	3,750	1/2-13	3/4	1 1/8	1 7/8	1/4	2
EP308S	4,500	5/8-11	7/8	1 1/4	2 1/2	5/16	2
EP310S	5,400	3/4-10	1 1/16	1 1/2	3	1/2	2
EP312S	16,400	1-8	1 3/8	1 7/8	4	13/32	4 1/4

Stainless Base w/Elastomer Pad, Stainless Stud

Part No.	Max load (lbs)	A	B	C	D	E	F
ESSP298S	525	10-32	3/8	17/32	3/4	7/64	1
ESSP300S	800	1/4-20	1/2	45/64	1	5/32	1 1/4
ESSP304S	2,800	3/8-16	5/8	7/8	1 1/4	3/16	2
ESSP306S	3,750	1/2-13	3/4	1 1/8	1 7/8	1/4	2
ESSP308S	4,500	5/8-11	7/8	1 1/4	2 1/2	5/16	2
ESSP310S	5,400	3/4-10	1 1/16	1 1/2	3	1/2	2
ESSP312S	16,400	1-8	1 3/8	1 7/8	4	13/32	4 1/4

LEVELING DEVICES*Original Stud Style***Original Leveling Devices****Inch-Standard Length****Delrin® Base with Steel Stud**

Vlier Stud Style Delrin Base/Steel Stud Leveling Devices feature natural (white) delrin plastic bases that provide protection for floor or surface finishes. Delrin offers high resistance to repeated impacts, moisture, solvents and heat up to 190°F. Zinc plate with gold chromate finish is standard. Black and clear(silver) finishes are optional and require extra lead time.

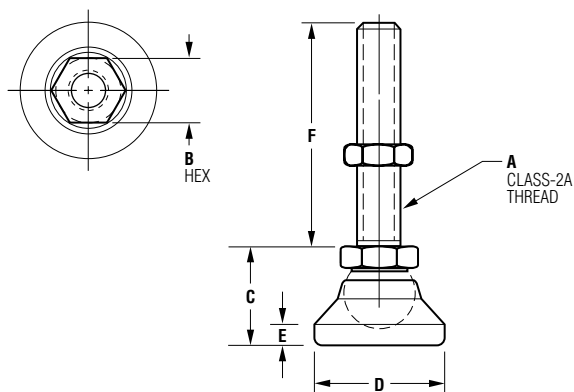
Delrin® Base with Stainless Steel Stud

Stainless Steel offers additional protection against rust and corrosion.

Special Features

- ◆ Hardened ball
- ◆ Protects surface finish
- ◆ Long-life, high-impact Delrin pad
- ◆ Stud and integrally machined ball
- ◆ Large diameter base support
- ◆ 15° swivel off centerline

Stud Style - Inch - Standard Length (Delrin)



Delrin Base, Steel Stud

Part No.	Max (Lbs) Work Load	A	B	C	D	E	F
NP298S	150	10-32	3/8	17/32	3/4	7/64	1
NP300S	200	1/4-20	1/2	45/64	1	5/32	1 1/4
NP304S	300	3/8-16	5/8	7/8	1 1/4	3/16	2
NP306S	700	1/2-13	3/4	1 1/8	1 7/8	1/4	2
NP308S	1200	5/8-11	7/8	1 1/4	2 1/2	5/16	2
NP310S	1800	3/4-10	1 1/16	1 1/2	3	1/2	2
NP312S	2400	1-8	1 3/8	1 7/8	4	13/32	4 1/4

Delrin® Base, Stainless Steel Stud

Part No.	Max load (lbs)	A	B	C	D	E	F
SSNP298S	150	10-32	3/8	17/32	3/4	7/64	1
SSNP300S	200	1/4-20	1/2	45/64	1	5/32	1-1/4
SSNP304S	300	3/8-16	5/8	7/8	1-1/4	3/16	2
SSNP306S	700	1/2-13	3/4	1-1/8	1-7/8	1/4	2
SSNP308S	1,200	5/8-11	7/8	1-1/4	2-1/2	5/16	2
SSNP310S	1,800	3/4-10	1-1/16	1-1/2	3	1/2	2
SSNP312S	2,400	1-8	1-3/8	1-7/8	4	13/32	4-1/4

Ordering for Optional Steel Finishes

To order black, add "1" at the end of the part number. To order silver, add "2" at the end of the part number. Allow four weeks lead time.



LEVELING DEVICES

Original Stud Style



Metric

Steel

Vlier Stud Style Steel Leveling Devices provide an integrally machined stud as part of the ball. Stud Style Bases swivel 15° off the centerline to adjust to uneven surfaces and level machine tools, electronic racks, benches, etc. Zinc plate with gold chromate finish is standard. Black and clear(silver) finishes are optional and require extra lead time.

Steel with Elastomer Pad

Vlier Stud Style Steel with Elastomer Leveling Pads offer a .125 neoprene elastomer bounded to the bottom of the base to provide non-skid support.

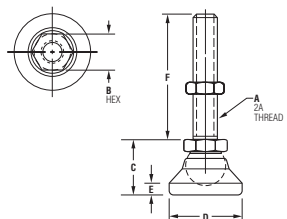
Stainless Steel

Delrin Base

Vlier Stud Style Steel with Delrin Base Leveling Devices feature natural (white) Delrin plastic bases that provide protection for floor or surface finishes. Delrin offers high resistance to repeated impacts, moisture solvents and heat up to 190° F.

Special Features

- ◆ Non-skid elastomer pad
- ◆ Protects floor or surface finish
- ◆ Hardened ball
- ◆ Stud and integrally machined ball
- ◆ Large diameter base support
- ◆ 15° swivel off centerline



Stud Style - Metric

METRIC Steel Base, Steel Stud							
Part No.	Max load (lbs)	A	B mm	C mm (in.)	D mm (in.)	E mm (in.)	F mm (in.)
PM10S	1705 kg (3750 lbs)	M10 X 1.5	17	22 (.87)	32 (1.26)	5 (.20)	51 (2.00)
PM12S	2273 kg (5000 lbs)	M12 X 1.75	19	29 (1.14)	48 (1.89)	6 (.24)	51 (2.00)
PM16S	2727 kg (6000 lbs)	M16 X 2.0	24	32 (1.26)	64 (2.52)	8 (.31)	51 (2.00)
PM20S	3273 kg (7200 lbs)	M20 X 2.5	30	38 (1.50)	76 (3.00)	13 (.51)	51 (2.00)
NEW SIZE PM24S	9979 kg (22,000 lbs)	M24 X 3.0	35	48 (1.88)	102 (4.00)	10 (.41)	108 (4.25)

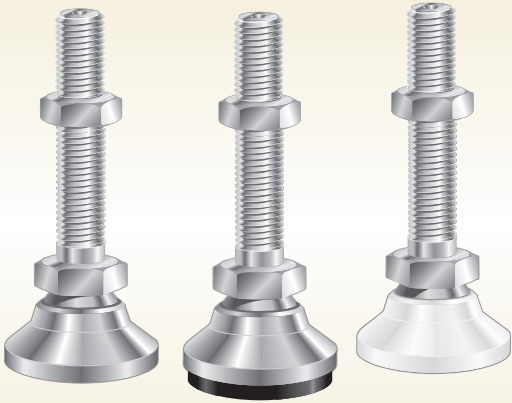
METRIC Steel Base w/Elastomer Pad, Steel Stud							
Part No.	Max load (lbs)	A	B mm	C mm (in.)	D mm (in.)	E mm (in.)	F mm (in.)
EPM10S	1273 kg (2800 lbs)	M10 X 1.5	17	22 (.87)	32 (1.26)	5 (.20)	51 (2.00)
EPM12S	1705 kg (3750 lbs)	M12 X 1.75	19	29 (1.14)	48 (1.89)	6 (.24)	51 (2.00)
EPM16S	2046 kg (4500 lbs)	M16 X 2.0	24	32 (1.26)	64 (2.52)	8 (.31)	51 (2.00)
EPM20S	2455 kg (5400 lbs)	M20 X 2.5	30	38 (1.50)	76 (3.00)	13 (.51)	51 (2.00)

METRIC Delrin Base, Steel Stud							
Part No.	Max load (lbs)	A	B mm	C mm (in.)	D mm (in.)	E mm (in.)	F mm (in.)
NPM10S	136 kg (300 lbs)	M10 X 1.5	17	22 (.87)	32 (1.26)	5 (.20)	51 (2.00)
NPM12S	318 kg (700 lbs)	M12 X 1.75	19	29 (1.14)	48 (1.89)	6 (.24)	51 (2.00)
NPM16S	546 kg (1200 lbs)	M16 X 2.0	24	32 (1.26)	64 (2.52)	8 (.31)	51 (2.00)
NPM20S	818 kg (1800 lbs)	M20 X 2.5	30	38 (1.50)	76 (3.00)	13 (.51)	51 (2.00)

METRIC Stainless Steel Base, Stainless Steel Stud							
Part No.	Max load (lbs)	A	B mm	C mm (in.)	D mm (in.)	E mm (in.)	F mm (in.)
SSPM10S	136 kg (300 lbs)	M10 X 1.5	17	22 (.87)	32 (1.26)	5 (.20)	51 (2.00)
SSPM12S	2273 kg (5000 lbs)	M12 X 1.75	19	29 (1.13)	48 (1.88)	6 (.25)	51 (2.00)
SSPM16S	2727 kg (6000 lbs)	M16 X 2.0	24	32 (1.25)	64 (2.50)	8 (.31)	51 (2.00)
SSPM20S	3273 kg (7200 lbs)	M20 X 2.5	30	38 (1.50)	76 (3.0)	13 (.50)	51 (2.00)
SSPM24S	9979 kg (22,000 lbs)	M24 X 3.0	35	48 (1.88)	102.00 (4.00)	10.00 (.41)	108 (4.25)

Ordering for Optional Steel Finishes

To order black, add "1" at the end of the part number. To order silver, add "2" at the end of the part number. Allow four weeks lead time. **107**

LEVELING DEVICES*Original Stud Style***Original Leveling Devices****Extended Length****Steel**

Vlier Stud Style Extended Length Steel Leveling Devices provide an integrally machined stud as part of the ball. They are for applications which require additional clearance. Zinc plate with gold chromate finish is standard. Black and clear (silver) finishes are optional and require extra lead time.

Steel with Elastomer Pad

Vlier Stud Style Extended Length Steel with Elastomer Pads offer the advantage of an all-stainless steel design for maximum protection against rust & corrosion.

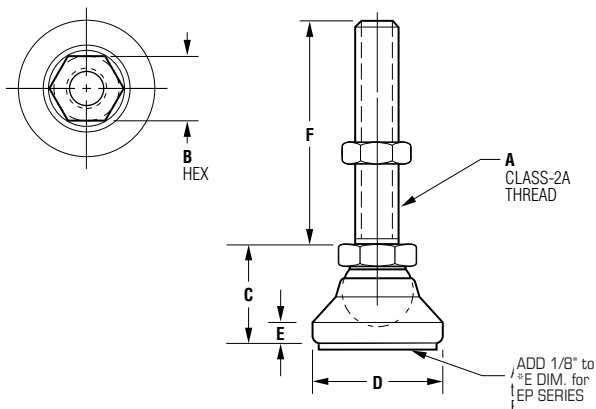
Delrin® Base with Steel Stud

Vlier Stud Style Extended Length Delrin Base Leveling Devices provide protection for floor or surface finishes.

Special Features

- ◆ Extended length studs twice as long as standard length
- ◆ Stud and integrally machined ball
- ◆ Large diameter base support
- ◆ 15° swivel off centerline

Stud Style - Extended Length (Steel)



Stud Type Pads Extended Length - Steel

Part No.	Max (Lbs) Work Load	A	B	C	D	E	F
P299S	700	10-32	3/8	17/32	3/4	7/64	2
P301S	1100	1/4-20	1/2	45/64	1	5/32	2.5
P305S	3750	3/8-16	5/8	7/8	1 1/4	3/16	4
P307S	5000	1/2-13	3/4	1 1/8	1 7/8	1/4	4
P309S	6000	5/8-11	7/8	1 1/4	2 1/2	5/16	4
P311S	7200	3/4-10	1 1/16	1 1/2	3	1/2	4
P313S	22000	1-8	1 3/8	1 7/8	4	13/32	8

Stud Type Pads Extended Length - Steel with Elastomer

Part No.	Max (Lbs) Work Load	A	B	C	D	E	F
EP299S	525	10-32	3/8	17/32	3/4	7/64	2
EP301S	800	1/4-20	1/2	45/64	1	5/32	2.5
EP305S	2800	3/8-16	5/8	7/8	1 1/4	3/16	4
EP307S	3750	1/2-13	3/4	1 1/8	1 7/8	1/4	4
EP309S	4500	5/8-11	7/8	1 1/4	2 1/2	5/16	4
EP311S	5400	3/4-10	1 1/16	1 1/2	3	1/2	4
EP313S	16400	1-8	1 3/8	1 7/8	4	13/32	8

Stud Type Pads Extended Length - Steel with Delrin

Part No.	Max (Lbs) Work Load	A	B	C	D	E	F
NP299S	150	10-32	3/8	17/32	3/4	7/64	2
NP301S	200	1/4-20	1/2	45/64	1	5/32	2.5
NP305S	300	3/8-16	5/8	7/8	1 1/4	3/16	4
NP307S	700	1/2-13	3/4	1 1/8	1 7/8	1/4	4
NP309S	1200	5/8-11	7/8	1 1/4	2 1/2	5/16	4
NP311S	1800	3/4-10	1 1/16	1 1/2	3	1/2	4
NP313S	2400	1-8	1 3/8	1 7/8	4	13/32	8

Ordering for Optional Steel Finishes

To order black, add "1" at the end of the part number. To order silver, add "2" at the end of the part number. Allow four weeks lead time.

LEVELING DEVICES

Original Stud Style



Original Leveling Devices

Extended Length

Stainless Steel

Stainless Steel with Elastomer Pad

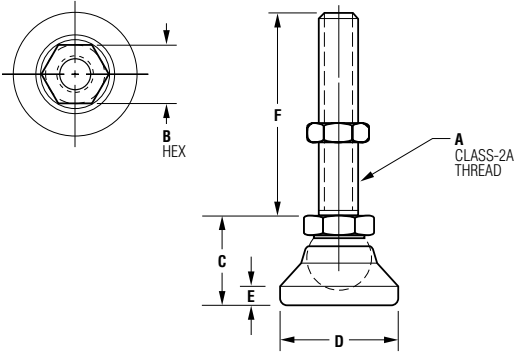
Delrin® Base with Stainless Steel Stud

Extended Length Stainless Steel Leveling Devices are for applications which require additional clearance, and offer maximum protection against rust and corrosion.

Special Features

- ◆ Extended length studs twice as long as standard length
- ◆ Stud and integrally machined ball
- ◆ Large diameter base support
- ◆ 15° swivel off centerline

Stud Style - Extended Length (Stainless Steel)



EXTENDED LENGTH Stainless Steel Base, Stainless Steel Stud

Part No.	Max load (lbs)	A	B	C	D	E	F
SSP299S	700	10-32	3/8	17/32	3/4	7/64	2
SSP301S	1,100	1/4-20	1/2	45/64	1	5/32	2-1/2
SSP305S	3,750	3/8-16	5/8	7/8	1-1/4	3/16	4
SSP307S	5,000	1/2-13	3/4	1-1/8	1-7/8	1/4	4
SSP309S	6,000	5/8-11	7/8	1-1/4	2-1/2	5/16	4
SSP311S	7,200	3/4-10	1-1/16	1-1/2	3	1/2	4
SSP313S	22,000	1-8	1-3/8	1-7/8	4	13/32	8

EXTENDED LENGTH Stainless Steel Base w/Elastomer Pad, Stainless Steel Stud

Part No.	Max load (lbs)	A	B	C	D	E	F
ESSP299S	525	10-32	3/8	17/32	3/4	7/64	2
ESSP301S	800	1/4-20	1/2	45/64	1	5/32	2-1/2
ESSP305S	2,800	3/8-16	5/8	7/8	1-1/4	3/16	4
ESSP307S	3,450	1/2-13	3/4	1-1/8	1-7/8	1/4	4
ESSP309S	4,500	5/8-11	7/8	1-1/4	2-1/2	5/16	4
ESSP311S	5,400	3/4-10	1-1/16	1-1/2	3	1/2	4
ESSP313S	16,400	1-8	1-3/8	1-7/8	4	13/32	8

EXTENDED LENGTH-Delrin® Base, Stainless Steel Stud

Part No.	Max load (lbs)	A	B	C	D	E	F
SSNP299S	150	10-32	3/8	17/32	3/4	7/64	2
SSNP301S	200	1/4-20	1/2	45/64	1	5/32	2-1/2
SSNP305S	300	3/8-16	5/8	7/8	1-1/4	3/16	4
SSNP307S	700	1/2-13	3/4	1-1/8	1-7/8	1/4	4
SSNP309S	1200	5/8-11	7/8	1-1/4	2-1/2	5/16	4
SSNP311S	1800	3/4-10	1-1/16	1-1/2	3	1/2	4
SSNP313S	2400	1-8	1-3/8	1-7/8	4	13/32	8

Ordering for Optional Steel Finishes

To order black, add "1" at the end of the part number. To order silver, add "2" at the end of the part number. Allow four weeks lead time.